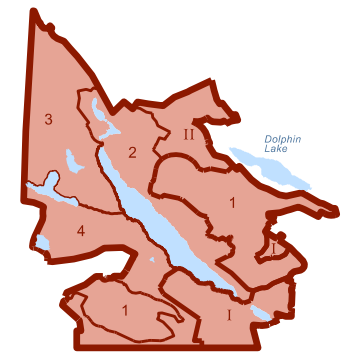


SCHEDULE "C": LAKES DISTRICT LAND USE PHASING PLAN

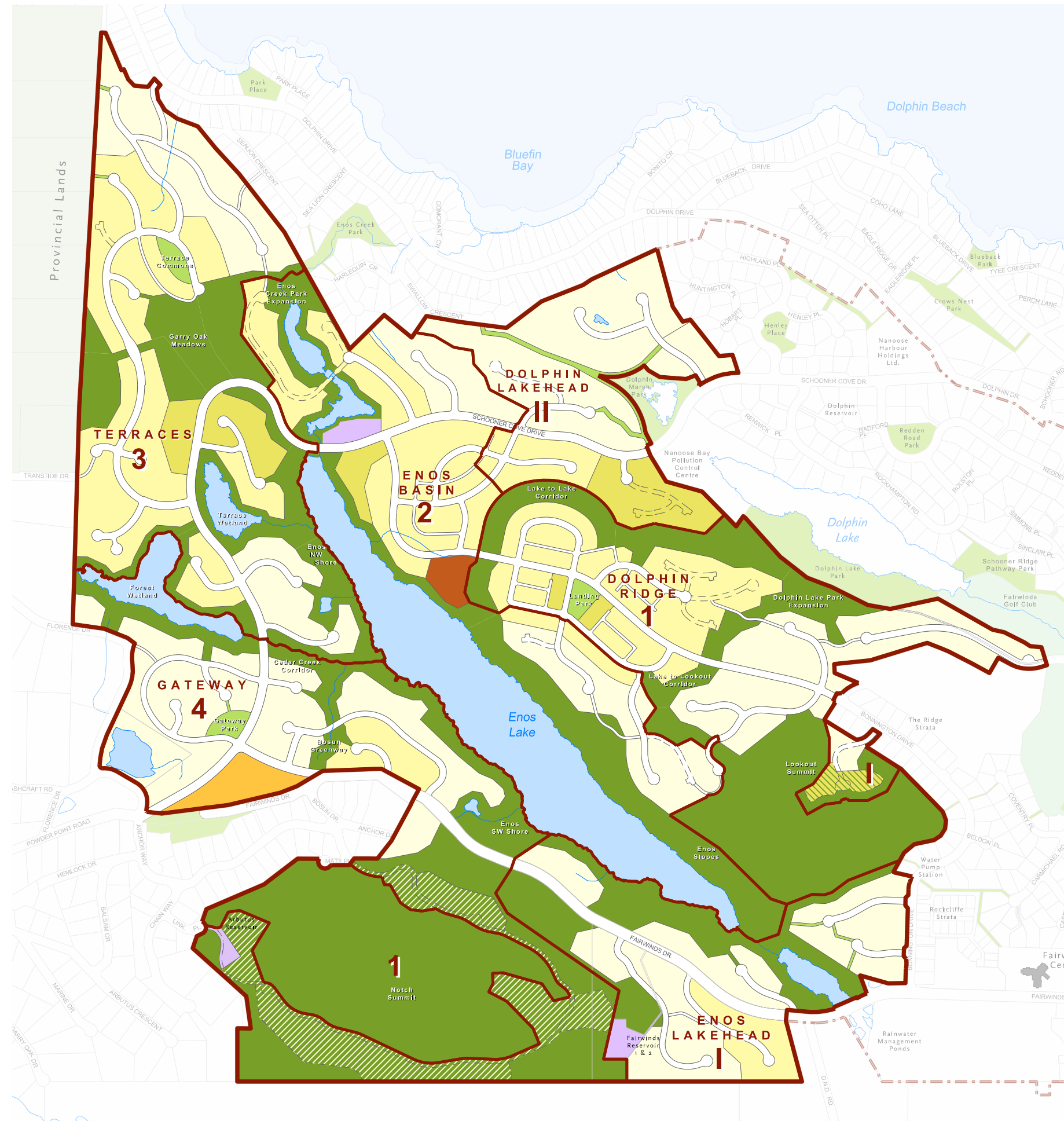
LAKES DISTRICT LAND USE PHASING



LEGEND

APRIL 2014

- Lakes District Neighbourhood Plan Area
- Phase Boundary
- Regional Park
- Community Park
- Single Dwelling
- Single Dwelling & Duplex
- Multiple Dwelling
- Neighbourhood Mixed Use
- Lakehouse Center
- Civic Infrastructure
- Public Road ROW
- Lookout Development Lands subject to Option to Purchase
- Notch Park Lands subject to Option to Purchase



PHASE 1	Percentage	Area (ha)	Units
	63%	43.61	
	1%	0.41	
	14%	9.68	
	14%	9.99	
	1%	0.57	
	7%	5.42	
Total	100%	69.68	351

PHASE 2	Percentage	Area (ha)	Units
	53%	30.76	
	14%	8.40	
	21%	12.20	
	2%	0.97	
	2%	0.92	
	1%	0.54	
	7%	4.56	
Total	100%	58.35	310

PHASE 3	Percentage	Area (ha)	Units
	29%	15.49	
	1%	0.46	
	20%	10.48	
	30%	16.14	
	6%	2.94	
	14%	7.41	
Total	100%	52.92	554

PHASE 4	Percentage	Area (ha)	Units
	54%	28.27	
	1%	0.44	
	29%	14.96	
	4%	2.09	
	3%	1.93	
	1%	0.27	
	8%	4.37	
Total	100%	52.37	175

INDEPENDENT AREA I	Percentage	Area (ha)	Units
	34%	10.65	
	3%	0.92	
	41%	12.74	
	8%	2.34	
	2%	0.56	
	12%	3.86	
Total	100%	31.07	112

INDEPENDENT AREA II	Percentage	Area (ha)	Units
	4%	0.82	
	59%	12.69	
	10%	2.16	
	15%	3.24	
	12%	2.52	
Total	100%	21.43	173

TOTAL	Percentage	Area (ha)	Units
	45%	128.78	
	1%	2.24	
	24%	69.00	
	15%	44.92	
	3%	8.53	
	1%	1.93	
	1%	0.92	
	1%	1.37	
	9%	28.14	
Total	100%	285.82	1675

