

# zero|waste

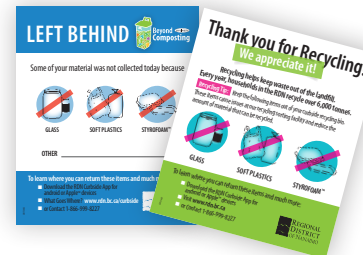
## Beyond Composting



### CURBSIDE OUTREACH

This summer, RDN Solid Waste Staff will be visiting curbside collection routes across the district, looking for unacceptable material (contamination) in the curbside bins. From June to August, Solid Waste Staff will visit over 4,000 homes looking for, tagging and removing unacceptable material from curbside recycling bins and leaving it behind.

Check the side of your bin for either a "Thank you for Recycling" or "Left Behind" sticker this summer. Turn over for a list of acceptable and unacceptable materials.



### COMMON UNACCEPTABLE CURBSIDE RECYCLING MATERIALS ARE:



Glass



Plastic Bags



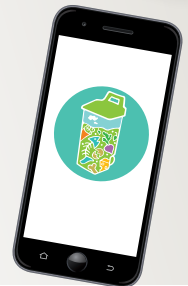
Plastic Wrap



Styrofoam

**Not sure about an item?** Download the RDN Curbside App. It's free to any smart device, or visit the web site at [rdn.bc.ca/curbside](http://rdn.bc.ca/curbside).

**Still have questions?** Call Solid Waste Staff at 250-390-6560



**MMBC – RECYCLE BC** In 2013 the RDN partnered with MMBC for the collection of curbside recycling. In April 2017 MMBC changed their name to Recycle BC. Look for more messaging from them later this summer.

Partnerships with Recycle BC require low Curbside Recycling Contamination. Because of residents commitment to recycling, the RDN can boast one of the lowest contamination rates of all member organizations.

## KEEP UP THE GOOD WORK BY KEEPING CONTAMINANTS OUT OF THE CURBSIDE BIN!

### URGENT NOTICE

As the weather becomes warmer, wildlife is more active and begin looking for food. Bears, raccoons, crows and many other animals will take advantage of an easy food source.

In the past few weeks, several bears have been spotted across the Regional District of Nanaimo, looking for food in garbage cans and green bins. Sadly, some of these bears had to be put down by Conservation Officers.

### DO YOUR PART TO MAKE SURE WILDLIFE REMAINS SAFE.

1. Secure your waste containers, keep them indoors and away from wildlife.
2. Put your bins out on collection day, not the night before.
3. Keep your bins clean; wash or rinse them out, use the appropriate bags to contain the waste and sprinkle with baking soda to minimize odours.

**Never approach a bear.** If you see a bear call: BC Conservation Officer Service at 1-877-952-7277 or dial 911.





**Inside Your Green Bin**  
FOOD WASTE INCLUDING:



**Inside Your Blue Box**  
CONTAINER RECYCLABLES:



**Inside Your Yellow Bag**  
PAPER RECYCLABLES:

- Bones
- Bread, cereal, grains
- Coffee grounds, filters, tea bags
- Fruit and vegetable scraps
- Meat, fish/seafood, poultry
- Pasta, rice
- Houseplants, cut and dried flowers

- Aseptic (Tetra Pak) boxes and cartons, e.g., soups, sauces
- Paper-based Microwavable bowls and cups
- Metal cans and lids
- Aerosol cans (empty) and caps e.g. food, air freshener, shaving cream, deodorant, hairspray
- Spiral wound paper cans and lids
- Aluminum foil wrap, aluminum take-out and baking containers
- Plastic – bottles, jugs, jars, caps, lids, clamshells and cold drink cups
- Plastic garden plant pots and seedling trays
- Plastic pails, containers e.g., for laundry detergent, ice cream, must be less than 25L

- Newspapers, inserts, flyers, catalogues, magazines, telephone books
- Household paper, envelopes, paper gift wrap, greeting cards
- Boxboard boxes, cereal, pizza boxes
- Frozen dessert containers, e.g., ice cream
- Dairy containers
- Multi layered bags for pet food, flour, sugar etc.

- SOILED PAPER**
- Paper towels and tissues
  - Paper plates
  - Paper food packaging (not plastic lined)
  - Waxed paper, parchment paper
  - Waxed ice cream, milk and cream containers

**Beside Your Blue Box**

- Cardboard and Shredded Paper
- REMEMBER TO:**
- Flatten large corrugated boxes and tie in bundles no larger than 8" thick (20 cm) X 30" wide (78 cm) X 30" tall (78 cm); staples and tape accepted
  - Place shredded paper in a tied clear plastic bag (no opaque, coloured or black bags)

- REMEMBER TO:**
- Empty boxboard boxes of leftover food and remove plastic/paper liners
  - Empty/rinse paper food containers

**Can't find an item?**  
Check the What Goes Where? feature in RDN Curbside App.  
Or go to [rdn.bc.ca/curbside](http://rdn.bc.ca/curbside)

- TAKE TO DROP-OFF DEPOTS**
- Glass containers
  - Plastic bags and plastic packaging
  - Foam packaging (Styrofoam)
  - Small appliances
  - Aerosol cans that contained paint, solvents, pesticides
  - Motor oil, solvents, flammable products, paint containers, batteries

**DO NOT INCLUDE IN CURBSIDE RECYCLING**

- Plastic bags or plastic packaging wrap
- Foam packaging (Styrofoam)
- Glass containers
- Bubble wrap
- Aerosol cans that contained paint, waxes, polishes, lubricants, solvents, pesticides or hazardous wastes



- Motor oil, lubricants, wax, solvents, flammable product, or paint containers
- Metal pots, coat hangers, scrap metal or appliances
- Chip or foil bags, blister packs, e.g., medicine and/or gum packaging
- Textiles
- Hardcover or paperback books

- Non paper gift wrap, e.g., foil, ribbons or bows; musical greeting cards with batteries
- Padded envelopes
- Foil or foil-lined paper and bags, e.g., for cookies and some pet food
- Straws
- Prescriptions or over the counter medicine

# THESE MATERIALS ARE NOT ACCEPTABLE IN CURBSIDE RECYCLING.



When foam packaging is compacted it breaks apart and becomes un-sortable. **These bits of foam** become lost in other recycling or fall to the ground and mix with other non-recyclable material, which are swept away into a garbage bin.

foam packaging

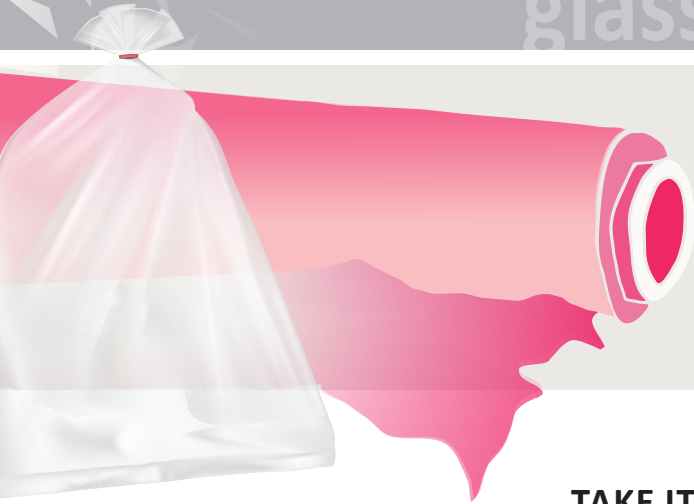
Glass placed in curbside recycling breaks apart and poses a **safety risk to workers** sorting through the recyclables. It mixes with other small bits of material that are not recyclable, destined to spend eternity in a landfill.

glass



Becoming **intertwined with other recyclable** material, plastic film collected in the curbside bin is not recycled and it takes other material that could have been recycled down with it.

plastic film



## TAKE IT TO THE DEPOT

If you really want to **do your part for the environment** and for the safety of others, keep foam packaging, glass and plastic bags out of your curbside recycling bin.

## HI-VIS FOR COMMERCIAL HAULERS - A MUST



Commercial haulers are reminded that PPE's are required to enter RDN Solid Waste facilities. Hard hat, safety foot wear and high visibility clothing are a must. You will not be allowed access if you do not have the appropriate safety gear.

## REGIONAL LANDFILL SCALE REPLACEMENT

### Taking a trip to the Landfill?

The Regional Landfill is planning a Scale Replacement in September 2017. Residents are reminded that peak traffic volumes occur between 11am and 3pm daily. Higher traffic months occur between April and September. Plan your trip accordingly to avoid delays!



# RDN SOLID WASTE FACILITIES

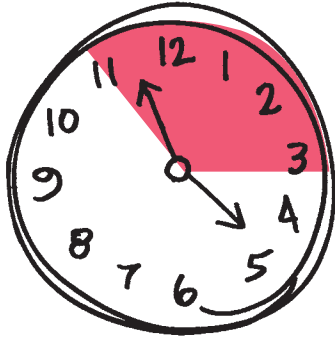
## REGIONAL LANDFILL

1105 Cedar Road, Nanaimo 250-722-2044

## CHURCH ROAD TRANSFER STATION

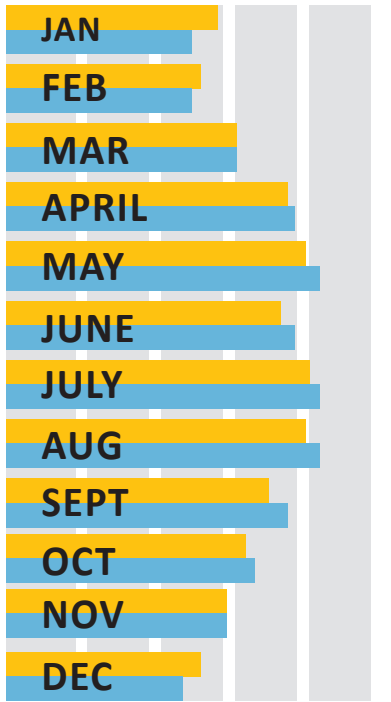
860 Church Road, Parksville 250-248-5254

RDN Solid Waste facilities charge by weight and type of material. Some items have an added surcharge due to extra processing. (see below)



**PEAK HOURS MAY LEAD TO LONGER WAIT TIMES.**

VISITORS PER MONTH

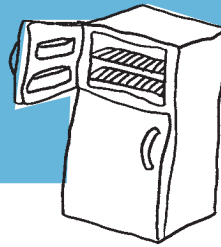


■ Regional Landfill  
■ Church Road Transfer Station

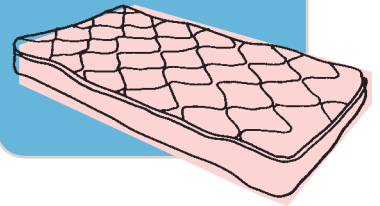
**APRIL TO AUGUST ARE PEAK MONTHS**

Average of 250 visitors per day

**FREON CONTAINING UNITS \$15 SURCHARGE**



**MATTRESSES & HIDE-A-BEDS UNITS \$15 SURCHARGE**



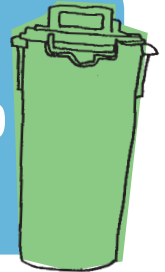
**GARBAGE TAGS**

**\$3**



**GREEN BINS**

**\$27<sup>50</sup>**



**ASBESTOS BAGS**

**\$2**



**ASBESTOS MANIFEST**

**\$20**



CASH / DEBIT / MASTER CARD / VISA ACCEPTED



**ASBESTOS INQUIRES MONDAY TO FRIDAY 250-722-2044**



[www.rdn.bc.ca](http://www.rdn.bc.ca)

### RESIDENTIAL HOURS OF OPERATION

7 days a week 8am - 5pm  
Closed Statutory Holidays