

SALISH SEA

Our maps are georeferenced and can be used with your GPS device or app.

Downloadable and printable maps of individual Regional Parks and Trails can be found at www.rdn.bc.ca/parks



REGIONAL DISTRICT OF NANAIMO



STRETCH YOUR LIMITS

- 1 Arrowsmith CPR Regional Trail 8
- 2 Benson Creek Falls Regional Park and Ammonite Falls Regional Trail 9
- 3 Mount Benson Regional Park and Witchcraft Lake Regional Trail 10
- 4 The Great Trail 11

TOUR A TOUR

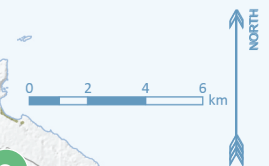
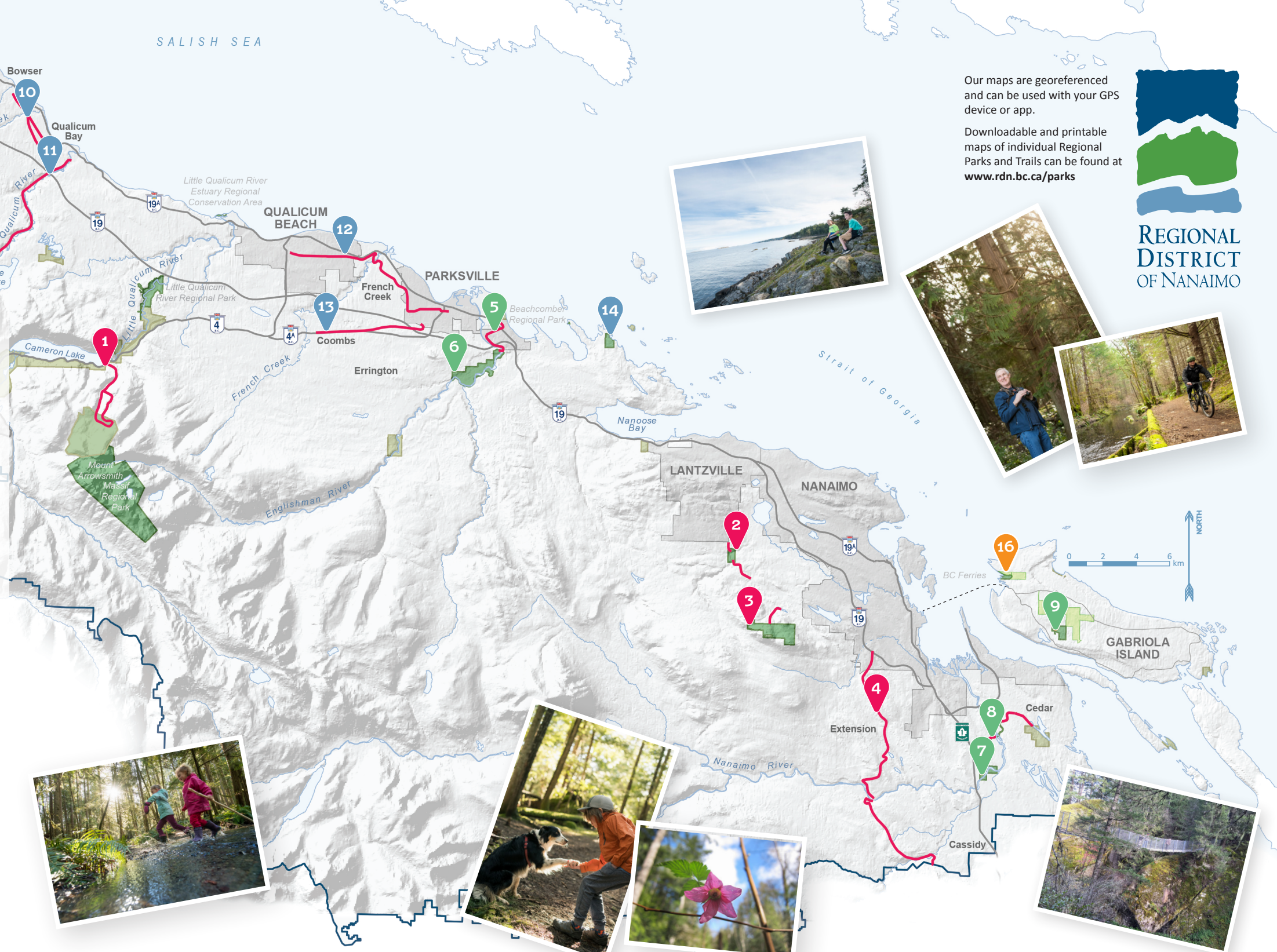
- 5 Top Bridge Regional Trail 14
- 6 Englishman River Regional Park 15
- 7 Nanaimo River Regional Park 16
- 8 Morden Colliery Regional Trail 17
- 9 Coats Marsh Regional Park 18

SOMETHING FOR EVERYONE

- 10 Lighthouse Country Regional Trail 22
- 11 Big Qualicum River Regional Trail 23
- 12 Parksville-Qualicum Beach Links 24
- 13 Coombs to Parksville Rail Trail 25
- 14 Moorecroft Regional Park 26

CAMPING

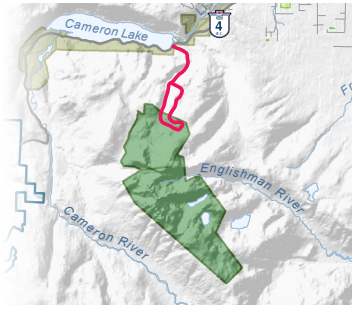
- 15 Horne Lake Regional Park 30
- 16 Descanso Bay Regional Park 31



1 Arrowsmith CPR Regional Trail

Park at the BC Parks Cameron Lake day-use area located on Hwy 4 at the east end of the lake. Carefully cross Hwy 4 to reach the trailhead.

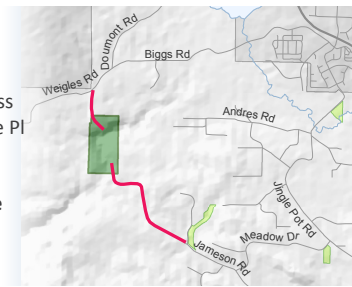
UTM Coordinates at Cameron Lake day-use area:
5460666.252 N
384707.370 E



2 Benson Creek Falls Regional Park and Ammonite Falls Regional Trail

Parking on Weigles Rd, 400m from the Doumont & Biggs Rd intersection and on Creekside Pl, off Jameson Rd. Note: Access Ammonite Falls from Creekside Pl parking lot.

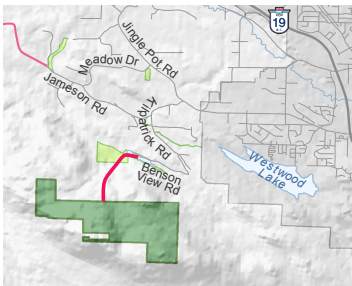
UTM Coordinates at Creekside parking lot:
5448177.834 N
422554.202 E



3 Mount Benson Regional Park and Witchcraft Lake Regional Trail

Parking area on Benson View Rd for Park & Trail access.

UTM Coordinates at Benson View Rd parking area:
5446264.669 N
424279.212 E

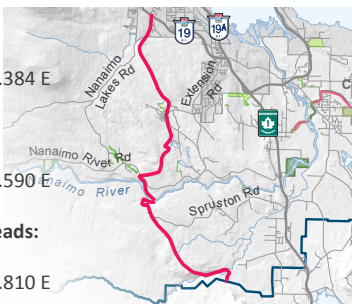


4 The Great Trail

Extension Ridge trailhead: off Harewood Mines Rd.
UTMs: 5442715.519 N;429327.384 E

Pipeline trailhead: off Nanaimo River Rd.
UTMs: 5436231.601 N;429148.590 E

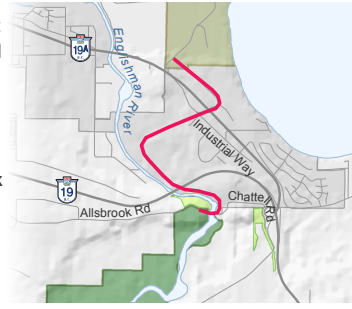
White Pine and Haslam trailheads: off Timberlands Rd.
UTMs: 5431275.141 N;433164.810 E



5 Top Bridge Regional Trail

Parkville access: along Resort Dr at Industrial Way & Tuan Rd or at the end of Chattell Rd.
Allsbrook Rd: end of the road at the suspension bridge

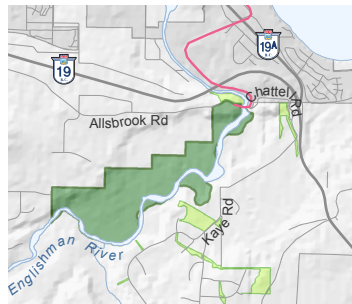
UTM Coordinates at Allsbrook Rd parking area:
5461394.194 N
407519.642 E



6 Englishman River Regional Park

Access at the end of Allsbrook Rd or at the end of Middlegate Rd.

UTM Coordinates at Allsbrook Rd parking area:
5461394.194 N
407519.642 E

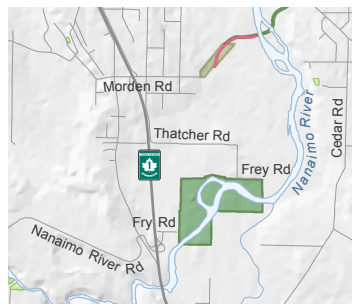


7 Nanaimo River Regional Park

Access on Fry Rd & Frey Rd.

UTM Coordinates at Frey Rd:
5437018.930 N
436611.398 E

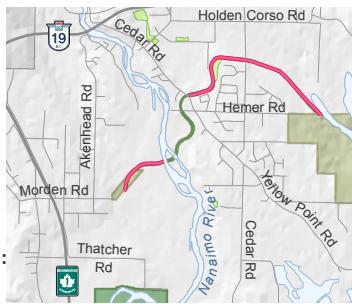
UTM Coordinates at Fry Rd:
5436382.228 N
435876.423 E



8 Morden Colliery Regional Trail

West side access: Morden Rd at Provincial Park.
East side access: Hemer Rd at Provincial Park.
Access also from Cedar Plaza.

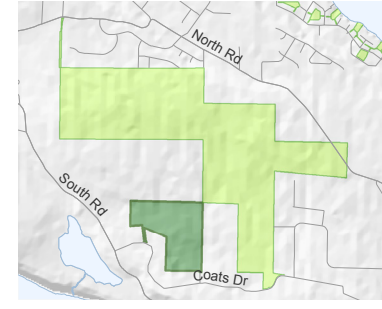
UTM Coordinates at end of Morden Rd:
5438355.879 N;436302.453 E
UTM Coordinates on Cedar Rd:
5439653.768 N;437184.738 E



9 Coats Marsh Regional Park

Access park on Gabriola Island on Stanley Pl off Coats Dr.

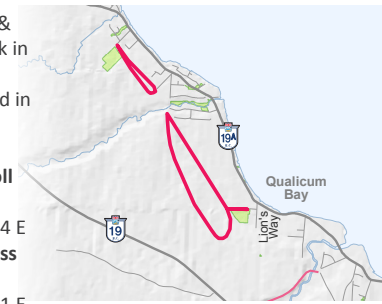
UTM Coordinates at Stanley Pl:
5444449.918 N
440907.225 E



10 Lighthouse Country Regional Trail

North loop: on McColl Rd & Wildwood Community Park in Bowser.
South loop: on Lioness Blvd in Qualicum Bay.

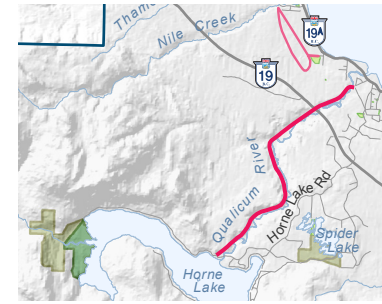
UTM Coordinates at McColl Rd access:
5476345.139 N;379253.914 E
UTM Coordinates at Lioness Blvd access:
5473567.480 N;381480.911 E



11 Big Qualicum River Regional Trail

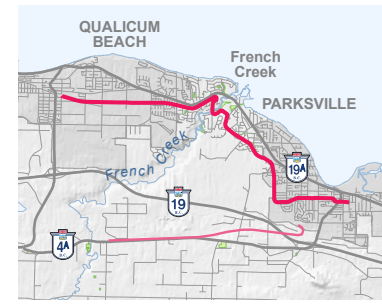
Access trail at the Big Qualicum River Salmon Hatchery off Horne Lake Rd between Hwys 19 & 19A.

UTM Coordinates at the fish hatchery:
5472493.253 N
382709.918 E



12 Parkville-Qualicum Beach Links

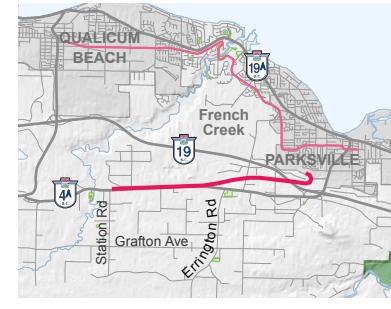
Accessed at any point along the way from City Hall in Parkville to downtown in Qualicum Beach.



13 Coombs to Parkville Rail Trail

Parkville access: at Springwood Park, parking lot available.
Coombs access: at Station Rd & Hwy 4A.

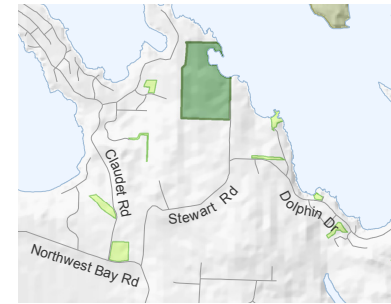
UTM Coordinates for Springwood Park parking area:
5462989.759 N
403126.642 E



14 Moorecroft Regional Park

Access to park at end of Stewart Rd.

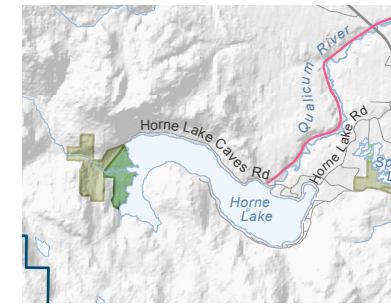
UTM Coordinates at Stewart Rd. entrance:
5461769.430 N
414432.817 E



15 Horne Lake Regional Park

Take exit 75 off Hwy 19 to the junction with Horne Lake Caves Rd; turn inland and follow signs to Horne Lake Regional Park.

UTM Coordinates at Regional Park entrance:
5468009.688 N
373526.659 E



16 Descanso Bay Regional Park

Access park on Gabriola Island at 595 Taylor Bay Rd.

UTM Coordinates at Regional Park entrance:
5448010.097 N
437624.051 E

