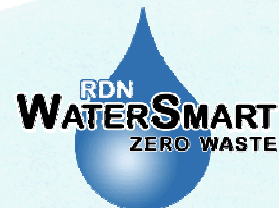


**Regional District of Nanaimo**

**MADRONA**

**Water Local Service Area  
Annual Report**

**2006**



## Table of Contents

1.	Introduction.....	1
2.	Madrona Water System .....	1
2.1	Groundwater Wells .....	1
2.2	Reservoirs.....	1
2.3	Distribution System.....	1
3.	Water Sampling and Testing Program.....	2
4.	Water Quality - Source Water and Distribution System.....	2
5.	Water Quality Inquiries and Complaints .....	2
6.	Groundwater Production and Average Consumption.....	3
7.	Maintenance Program.....	3
8.	Water System Projects.....	4
8.1	2006 Completed Projects .....	4
8.2	2007 Proposed Projects & Upgrades .....	4
8.3	2007 Proposed Studies.....	4
9.	Emergency Response Plan.....	4
10.	Cross Connection Control.....	4
11.	Closing.....	4

Appendix A - Map of Madrona Water Local Service Area

Appendix B - Water Quality Testing Results

Appendix C - Emergency Response Plan

## 1. Introduction

The following annual report describes the Madrona Water Local Service Area and summarizes the water quality and production data from 2006. This report also includes a summary of inquiries and complaints, completed and proposed maintenance activities, the Emergency Response Plan, and the Cross Connection Control Program.

This report is to be submitted to the Vancouver Island Health Authority by the Spring of 2007.

## 2. Madrona Water System

The Madrona Water Service Area was established in 1973 and comprises an area located between Northwest Bay Road and Madrona Point on the Nanoose Peninsula. During the winter months, the water source for the Madrona Water System comes from one groundwater well located nearby, which is not chlorinated. The water supply is supplemented, when required, with chlorinated water from the Fairwinds Water System. From May to October each year, the water source to Madrona is replaced by surface water from the Englishman River, which has been chlorinated. Both the groundwater and surface water sources are stored in one reservoir. A map of the Madrona Water System is provided in Appendix A for reference.

### 2.1 Groundwater Wells

One groundwater production well is present in Block 563, near Northwest Bay Road, Nanoose Bay, B.C.

Well / Name	Well Depth	Wellhead Protection	Treated/Untreated with Chlorine
Madrona #4	52.1 m	Yes	Untreated

### 2.2 Reservoirs

One concrete service reservoir is present in Block 563, near Northwest Bay Road, and has a capacity of 485 m<sup>3</sup> (100,000 imperial gallons).

### 2.3 Distribution System

The water distribution system in Madrona is comprised of 100mm and 150mm asbestos-concrete watermains, and 150mm and 200mm PVC watermains. Fire hydrants are located throughout the system.

### 3. Water Sampling and Testing Program

Water sampling and testing is carried out weekly in the distribution system. The following table includes a summary of all testing:

Timing	Location	Tests
Weekly	RDN (in-house) Laboratory	Total, Fecal coliforms Temperature, pH, Conductivity Chlorine residual, Salinity Total Dissolved Solids Iron, Manganese
Weekly (Health Dept. Requirement)	North Island Labs	Total, Fecal coliforms
Annual Source Water Testing	North Island Labs	Complete potability testing of each well
Annual System Water Testing	North Island Labs	Complete potability testing of distribution system

### 4. Water Quality - Source Water and Distribution System

Up-to-date water quality reports and lab data are posted monthly on the RDN website ([www.rdn.bc.ca/WaterSmart](http://www.rdn.bc.ca/WaterSmart)). Tables of water quality testing results for both the source water and distribution system are provided at the end of this report under Appendix B.

### 5. Water Quality Inquiries and Complaints

Very few complaints and inquiries were received from the Madrona water service area, and were typically related to water billing rates.

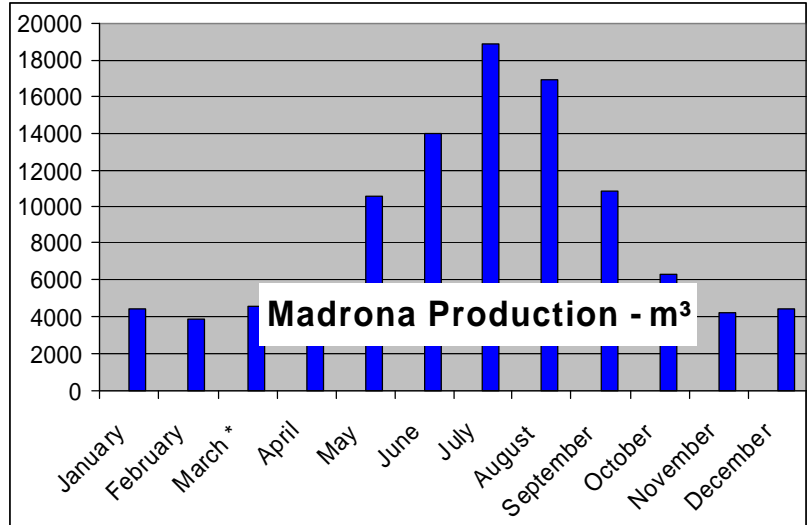
## 6. Groundwater Production and Average Consumption

Average monthly groundwater production (total from all wells) is shown in the table and chart below.

### Monthly Production

<b>January</b>	<b>4377.1</b>	<b>m<sup>3</sup></b>
<b>February</b>	<b>3902.8</b>	<b>m<sup>3</sup></b>
<b>March*</b>	<b>4624.7</b>	<b>m<sup>3</sup></b>
<b>April</b>	<b>5324.2</b>	<b>m<sup>3</sup></b>
<b>May</b>	<b>10516.7</b>	<b>m<sup>3</sup></b>
<b>June</b>	<b>14015.0</b>	<b>m<sup>3</sup></b>
<b>July</b>	<b>18863.0</b>	<b>m<sup>3</sup></b>
<b>August</b>	<b>16902.6</b>	<b>m<sup>3</sup></b>
<b>September</b>	<b>10898.8</b>	<b>m<sup>3</sup></b>
<b>October</b>	<b>6343.2</b>	<b>m<sup>3</sup></b>
<b>November</b>	<b>4197.3</b>	<b>m<sup>3</sup></b>
<b>December</b>	<b>4427.4</b>	<b>m<sup>3</sup></b>

\* indicates watermain flushing in March

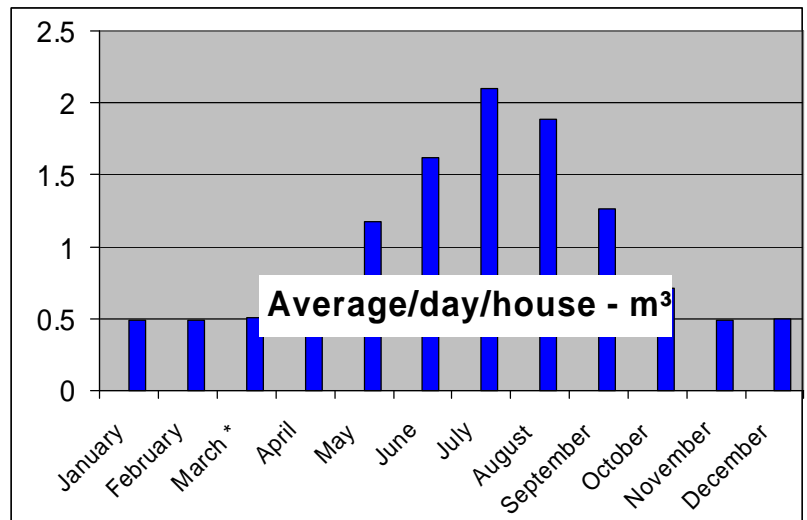


The average household water consumption per month is shown in the table and chart below.

### Average / Day / House

<b>January</b>	<b>0.489</b>	<b>m<sup>3</sup></b>
<b>February</b>	<b>0.482</b>	<b>m<sup>3</sup></b>
<b>March*</b>	<b>0.516</b>	<b>m<sup>3</sup></b>
<b>April</b>	<b>0.614</b>	<b>m<sup>3</sup></b>
<b>May</b>	<b>1.174</b>	<b>m<sup>3</sup></b>
<b>June</b>	<b>1.616</b>	<b>m<sup>3</sup></b>
<b>July</b>	<b>2.105</b>	<b>m<sup>3</sup></b>
<b>August</b>	<b>1.887</b>	<b>m<sup>3</sup></b>
<b>September</b>	<b>1.257</b>	<b>m<sup>3</sup></b>
<b>October</b>	<b>0.708</b>	<b>m<sup>3</sup></b>
<b>November</b>	<b>0.484</b>	<b>M<sup>3</sup></b>
<b>December</b>	<b>0.494</b>	<b>M<sup>3</sup></b>

\* indicates watermain flushing in March



Groundwater production and household water consumption both increased dramatically from May to September despite the implementation of outdoor watering restrictions.

## 7. Maintenance Program

Regular maintenance and inspections are completed around the wellhead area to reduce or eliminate the risk of contamination and system failure. Watermains are flushed once annually; in the Spring.

## 8. Water System Projects

### 8.1 2006 Completed Projects

- Wooden reservoir on Ballenas Road was removed.
- Water audit for the whole Nanoose Bay Peninsula (including Madrona) was completed.
- A comprehensive water conservation program was carried out from May to October.
- A Standard Operating Procedures Manual was created for all routine Utilities duties.
- The Emergency Response Plan was reviewed and updated.
- A security review was completed by an independent agency and a report with recommendations was provided.
- A web-based Capital Asset Management Program was completed to inventory all water system pipes, valves, wells, reservoirs, hydrants, and manholes, etc. to assist with infrastructure replacement priorities.

### 8.2 2007 Proposed Projects & Upgrades

- Madrona Bulk Water Pump Station Design.
- Re-keying all locked facilities.
- Improving wellhead protection.
- Other security improvements.
- Developing objectives for a SCADA system.

### 8.3 2007 Proposed Studies

- Innovative water supply and re-use.
- Well redevelopment planning.
- Water Use Bylaw/Best Practices Review.

## 9. Emergency Response Plan

The Emergency Response Plan (ERP) was reviewed and updated in 2006. A copy of the ERP is attached in Appendix C.

## 10. Cross Connection Control

A formalized Cross Connection Control Program will be initiated in 2007. Cross connection controls already in-place include check valves at each residential water meter.

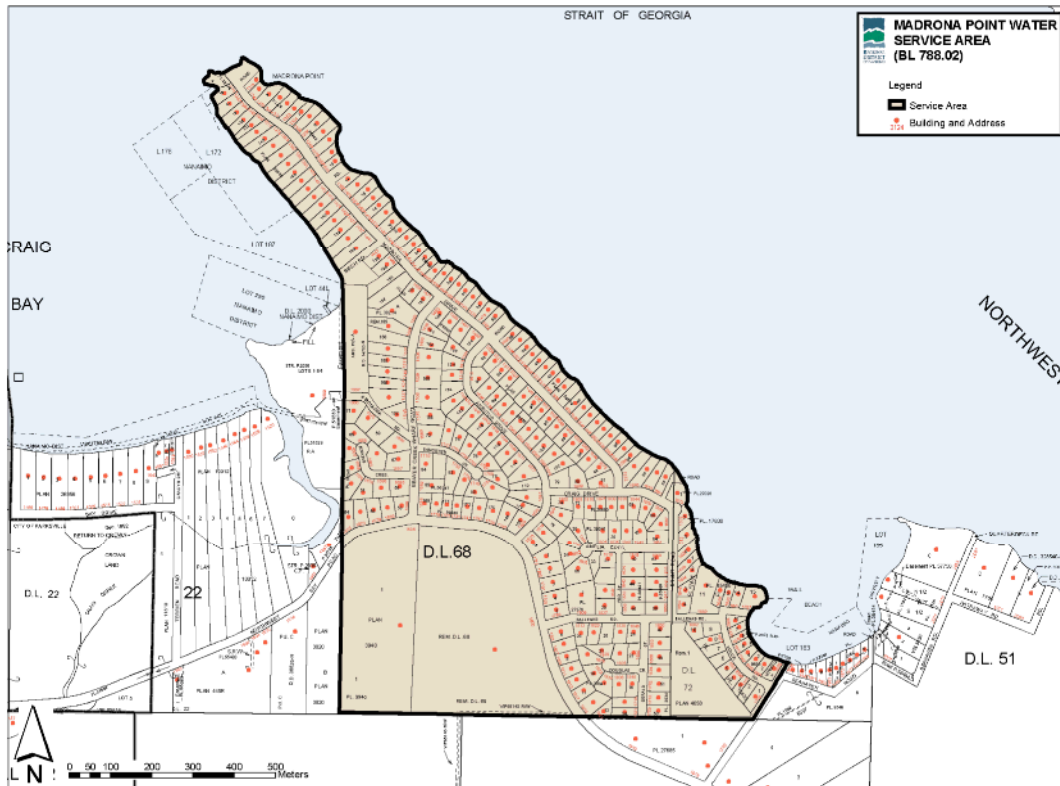
## 11. Closing

An annual report for the year 2007 will be prepared and submitted to the Vancouver Island Health Authority in the Spring of 2008. Annual reports are also available on our website at [www.rdn.bc.ca/WaterSmart](http://www.rdn.bc.ca/WaterSmart).

**APPENIDX A**

**MAP OF MADRONA  
WATER LOCAL SERVICE AREA**

# MADRONA WATER LOCAL SERVICE AREA





## **APPENDIX B**

### **WATER QUALITY TESTING RESULTS**

## APPENDIX C

### EMERGENCY RESPONSE PLAN