

# Regional District of Nanaimo Agricultural Land Use Inventory - 2012

## MAP 1 - LAND COVER & FARMED AREA

- Land Cover & Farmed Area**
- Farmed**
    - Cultivated field crops
    - Farm Infrastructure
    - Greenhouses
  - Anthropogenic (not farmed)**
    - Managed vegetation
    - Built up - Settlement, Transportation, etc.
    - Non Built or Bare
  - Natural & Semi-natural**
    - Anthropogenic Waterbodies
    - Vegetated
    - Wetlands & waterbodies
    - Natural pasture
  - Not Surveyed**
    - Not surveyed
- Parcels**
- Surveyed
  - Not surveyed
- Agricultural Land Reserve**
- Boundaries (2011)
- Municipalities**
- Boundaries (2011)
- Indian Reserves**
- Boundaries (2011)
- Parks**
- Provincial Parks
- Ecological Reserves**
- Ecological Reserves

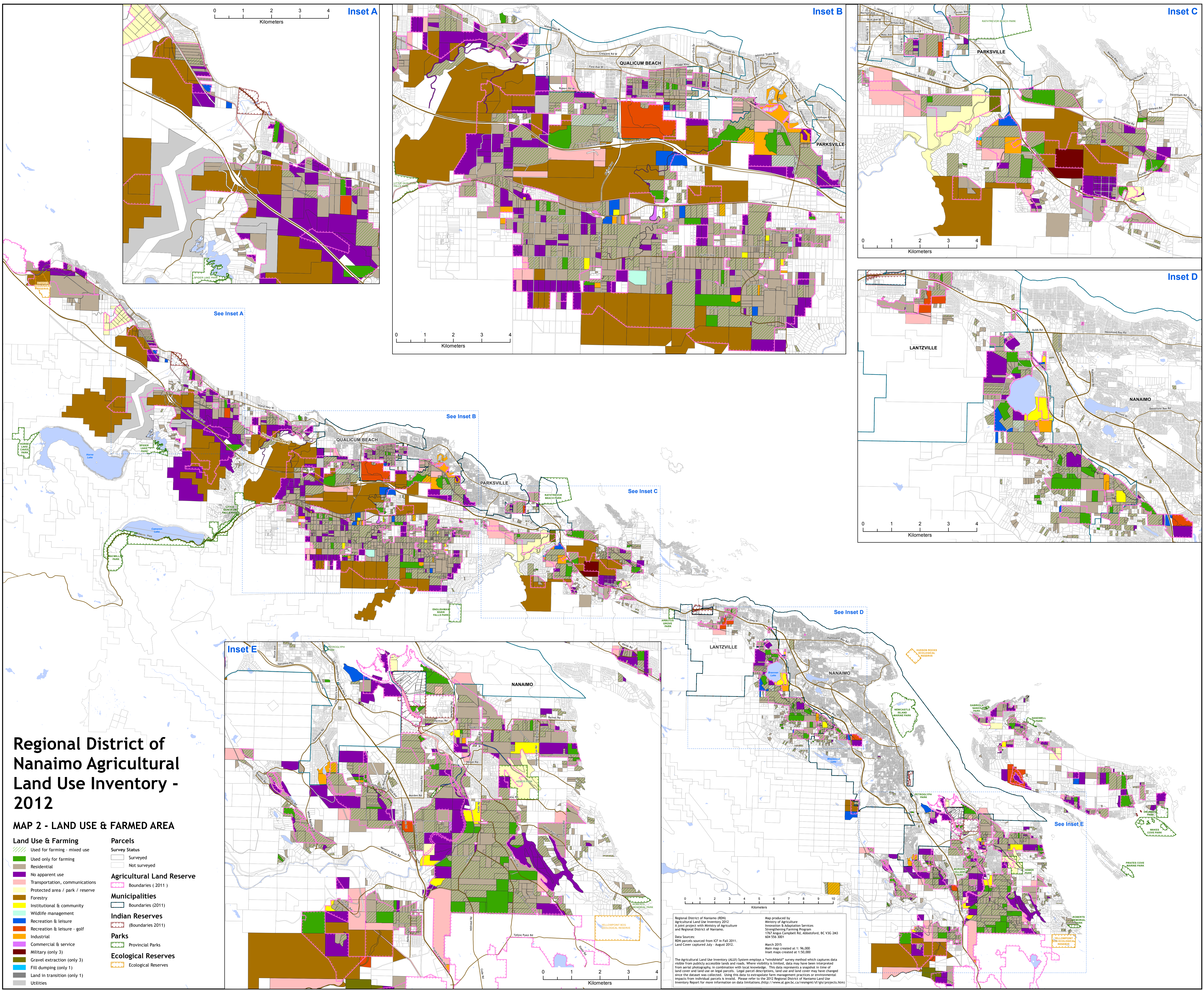
Regional District of Nanaimo (RDN)  
 Agricultural Land Use Inventory 2012  
 A joint project with Ministry of Agriculture  
 and Regional District of Nanaimo.

**Data Sources:**  
 RDN parcels sourced from ICF in Fall 2011.  
 Land cover captured July - August 2012.

**Map produced by:**  
 Ministry of Agriculture  
 Innovation & Adaptation Services  
 Strengthening Farming Program  
 1767 Angus Campbell Rd, Abbotsford, BC V3G 2M3  
 604-556-3001

**March 2015**  
 Main map created at 1:96,000  
 Inset maps created at 1:50,000

The Agricultural Land Use Inventory (ALUI) System employs a "windowed" survey method which captures data visible from publicly accessible lands and roads. Where visibility is limited, data may have been interpreted from aerial photography, in combination with local knowledge. This data represents a snapshot in time of land cover and land use on legal parcels. Legal parcel descriptions, land use and land cover may have changed since the dataset was collected. Using this data to extrapolate farm management practices or environmental impacts from individual parcels is invalid. Please refer to the 2012 Regional District of Nanaimo Land Use Inventory Report for more information on data limitations. (<http://www.al.gov.bc.ca/research/rsf/gis/projects.htm>)



# Regional District of Nanaimo Agricultural Land Use Inventory - 2012

## MAP 2 - LAND USE & FARMED AREA

- |  |   |
|--|---|
| <b>Land Use &amp; Farming</b><br><ul style="list-style-type: none"> <li><span style="display: inline-block; width: 10px; height: 10px; background-color: #90EE90; border: 1px solid black; margin-right: 5px;"></span> Used for farming - mixed use</li> <li><span style="display: inline-block; width: 10px; height: 10px; background-color: #3CB371; border: 1px solid black; margin-right: 5px;"></span> Used only for farming</li> <li><span style="display: inline-block; width: 10px; height: 10px; background-color: #D2B48C; border: 1px solid black; margin-right: 5px;"></span> Residential</li> <li><span style="display: inline-block; width: 10px; height: 10px; background-color: #FFFFFF; border: 1px solid black; margin-right: 5px;"></span> No apparent use</li> <li><span style="display: inline-block; width: 10px; height: 10px; background-color: #FFC0CB; border: 1px solid black; margin-right: 5px;"></span> Transportation, communications</li> <li><span style="display: inline-block; width: 10px; height: 10px; background-color: #FFFACD; border: 1px solid black; margin-right: 5px;"></span> Protected area / park / reserve</li> <li><span style="display: inline-block; width: 10px; height: 10px; background-color: #8B4513; border: 1px solid black; margin-right: 5px;"></span> Forestry</li> <li><span style="display: inline-block; width: 10px; height: 10px; background-color: #90EE90; border: 1px solid black; margin-right: 5px;"></span> Institutional &amp; community</li> <li><span style="display: inline-block; width: 10px; height: 10px; background-color: #90EE90; border: 1px solid black; margin-right: 5px;"></span> Wildlife management</li> <li><span style="display: inline-block; width: 10px; height: 10px; background-color: #4682B4; border: 1px solid black; margin-right: 5px;"></span> Recreation &amp; leisure</li> <li><span style="display: inline-block; width: 10px; height: 10px; background-color: #FF4500; border: 1px solid black; margin-right: 5px;"></span> Recreation &amp; leisure - golf</li> <li><span style="display: inline-block; width: 10px; height: 10px; background-color: #FF69B4; border: 1px solid black; margin-right: 5px;"></span> Industrial</li> <li><span style="display: inline-block; width: 10px; height: 10px; background-color: #FF69B4; border: 1px solid black; margin-right: 5px;"></span> Commercial &amp; service</li> <li><span style="display: inline-block; width: 10px; height: 10px; background-color: #8B4513; border: 1px solid black; margin-right: 5px;"></span> Military (only 3)</li> <li><span style="display: inline-block; width: 10px; height: 10px; background-color: #8B4513; border: 1px solid black; margin-right: 5px;"></span> Gravel extraction (only 3)</li> <li><span style="display: inline-block; width: 10px; height: 10px; background-color: #4682B4; border: 1px solid black; margin-right: 5px;"></span> Fill dumping (only 1)</li> <li><span style="display: inline-block; width: 10px; height: 10px; background-color: #8B4513; border: 1px solid black; margin-right: 5px;"></span> Land in transition (only 1)</li> <li><span style="display: inline-block; width: 10px; height: 10px; background-color: #8B4513; border: 1px solid black; margin-right: 5px;"></span> Utilities</li> </ul> | <b>Parcels</b><br><ul style="list-style-type: none"> <li><span style="display: inline-block; width: 10px; height: 10px; border: 1px solid black; margin-right: 5px;"></span> Surveyed</li> <li><span style="display: inline-block; width: 10px; height: 10px; border: 1px dashed black; margin-right: 5px;"></span> Not surveyed</li> </ul>             |
| <b>Agricultural Land Reserve</b><br><ul style="list-style-type: none"> <li><span style="display: inline-block; width: 10px; height: 10px; border: 2px solid black; margin-right: 5px;"></span> Boundaries (2011)</li> </ul>  | <b>Municipalities</b><br><ul style="list-style-type: none"> <li><span style="display: inline-block; width: 10px; height: 10px; border: 1px solid black; margin-right: 5px;"></span> Boundaries (2011)</li> </ul>  |
| <b>Indian Reserves</b><br><ul style="list-style-type: none"> <li><span style="display: inline-block; width: 10px; height: 10px; border: 2px dashed black; margin-right: 5px;"></span> (Boundaries 2011)</li> </ul>   | <b>Parks</b><br><ul style="list-style-type: none"> <li><span style="display: inline-block; width: 10px; height: 10px; border: 1px solid black; margin-right: 5px;"></span> Provincial Parks</li> <li><span style="display: inline-block; width: 10px; height: 10px; border: 1px solid black; margin-right: 5px;"></span> Ecological Reserves</li> </ul> |

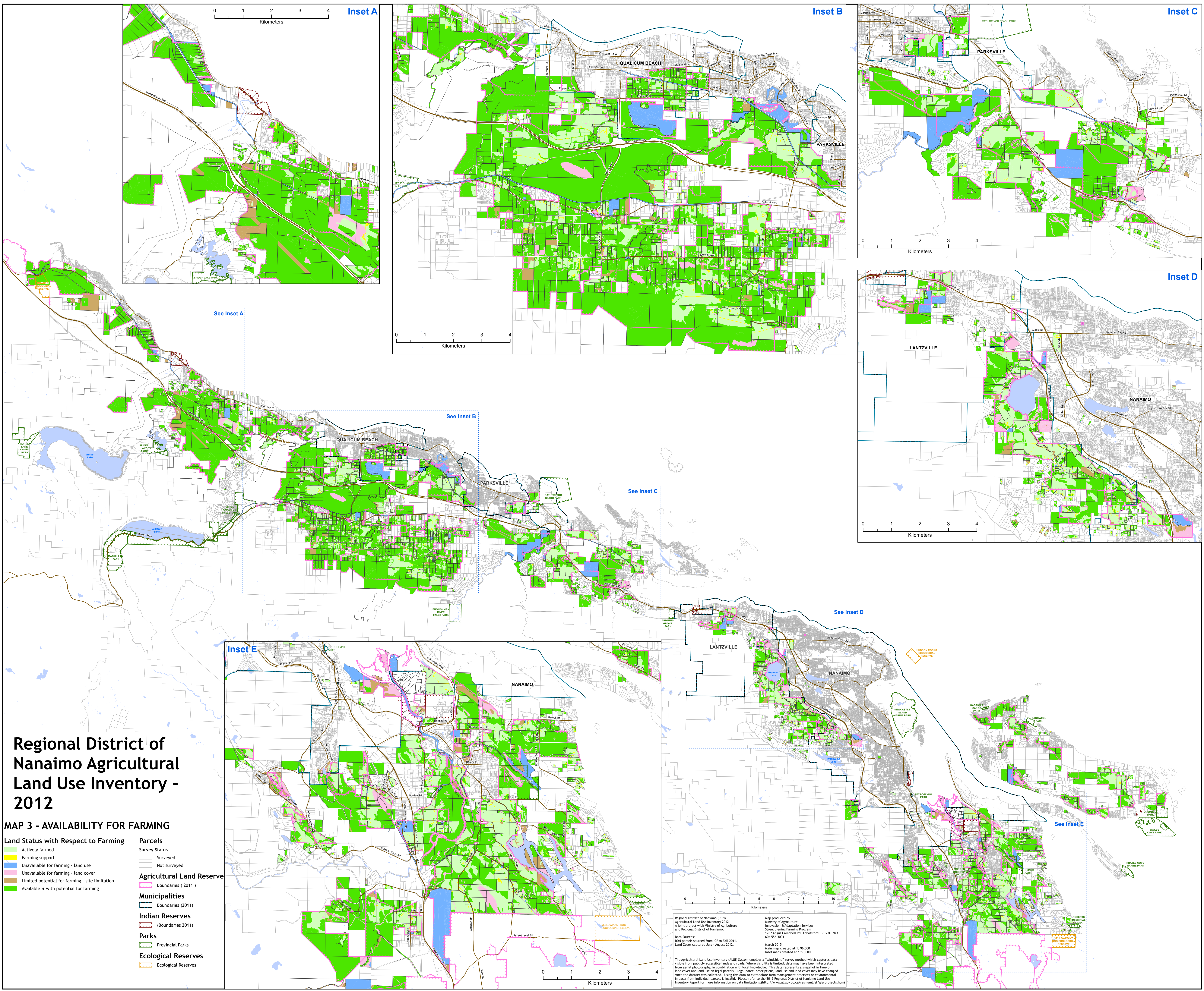
Regional District of Nanaimo (RDN)  
 Agricultural Land Use Inventory 2012  
 A joint project with Ministry of Agriculture  
 and Regional District of Nanaimo.

Data Sources:  
 RDN parcels sourced from ICF in Fall 2011.  
 Land cover captured July - August 2012.

Map produced by  
 Ministry of Agriculture  
 Innovation & Adaptation Services  
 Strengthening Farming Program  
 1767 Angus Campbell Rd, Abbotsford, BC V3G 2M3  
 604-556-3001

March 2015  
 Main map created at 1:90,000  
 Inset maps created at 1:50,000

The Agricultural Land Use Inventory (ALUI) System employs a "windowed" survey method which captures data visible from publicly accessible lands and roads. Where visibility is limited, data may have been interpreted from aerial photography, in combination with local knowledge. This data represents a snapshot in time of land cover and land use on legal parcels. Legal parcel boundaries, land use and land cover may have changed since the dataset was collected. Using this data to extrapolate farm management practices or environmental impacts from individual parcels is invalid. Please refer to the 2012 Regional District of Nanaimo Land Use Inventory Report for more information on data limitations. (<http://www.al.gov.bc.ca/research/rsf/gis/projects.htm>)



# Regional District of Nanaimo Agricultural Land Use Inventory - 2012

## MAP 3 - AVAILABILITY FOR FARMING

**Land Status with Respect to Farming**

- Actively farmed
- Farming support
- Unavailable for farming - land use
- Unavailable for farming - land cover
- Limited potential for farming - site limitation
- Available & with potential for farming

**Parcels**

- Surveyed
- Not surveyed

**Agricultural Land Reserve**

- Boundaries (2011)

**Municipalities**

- Boundaries (2011)

**Indian Reserves**

- Boundaries (2011)

**Parks**

- Provincial Parks

**Ecological Reserves**

- Ecological Reserves

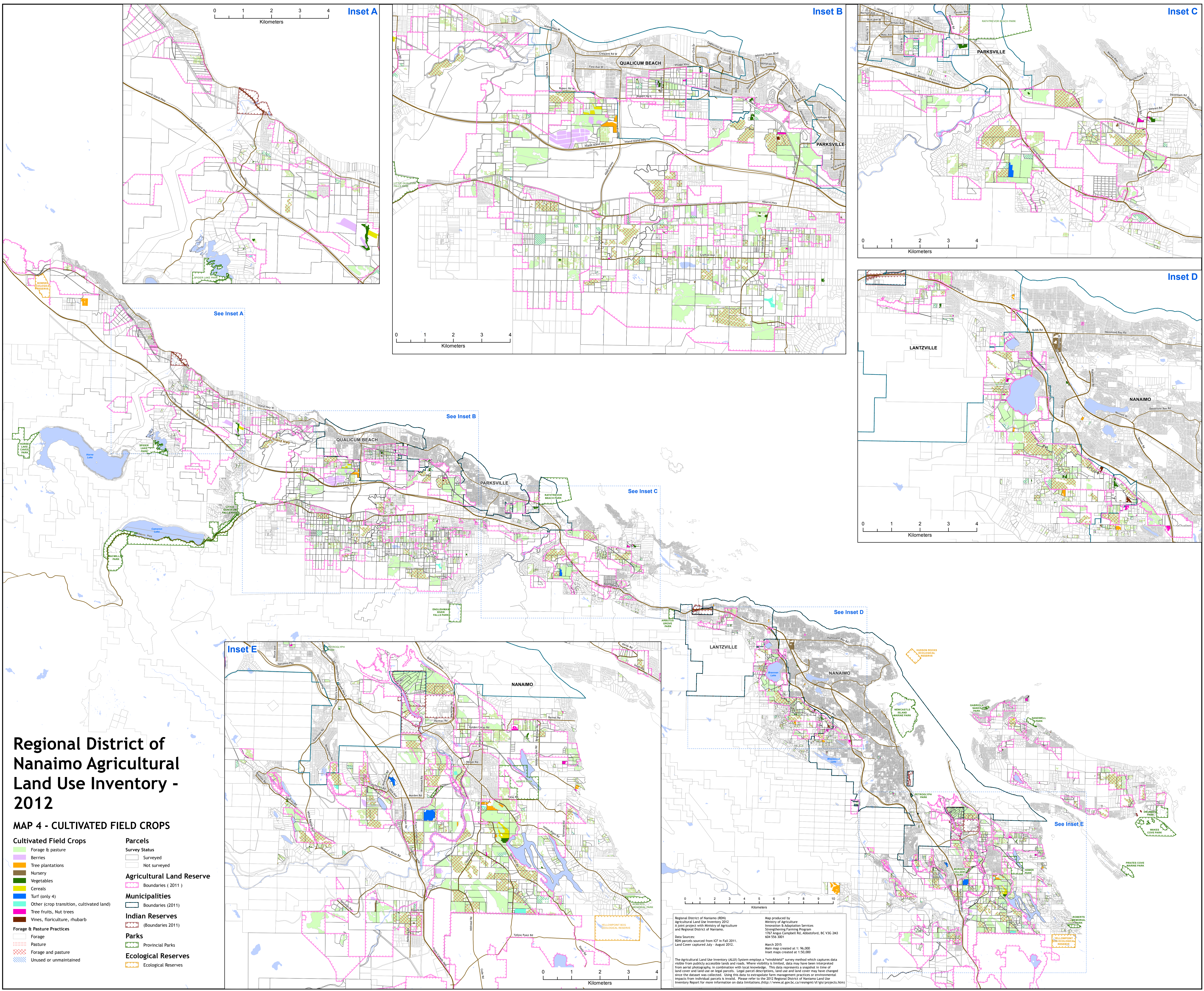
Regional District of Nanaimo (RDN)  
 Agricultural Land Use Inventory 2012  
 A joint project with Ministry of Agriculture  
 and Regional District of Nanaimo

**Data Sources:**  
 RDN parcels sourced from ICF in Fall 2011.  
 Land cover captured July - August 2012.

**Map produced by:**  
 Ministry of Agriculture  
 Innovation & Adaptation Services  
 Strengthening Farming Program  
 1767 Angus Campbell Rd, Abbotsford, BC V3G 2M3  
 604-556-3001

**March 2015**  
 Main map created at 1:96,000  
 Inset maps created at 1:50,000

The Agricultural Land Use Inventory (ALUI) System employs a "windowed" survey method which captures data visible from publicly accessible lands and roads. Where visibility is limited, data may have been interpreted from aerial photography, in combination with local knowledge. This data represents a snapshot in time of land cover and land use on legal parcels. Legal parcel boundaries, land use and land cover may have changed since the dataset was collected. Using this data to extrapolate farm management practices or environmental impacts from individual parcels is invalid. Please refer to the 2012 Regional District of Nanaimo Land Use Inventory Report for more information on data limitations. (<http://www.al.gov.bc.ca/reimg/rf/gis/projects.htm>)



# Regional District of Nanaimo Agricultural Land Use Inventory - 2012

## MAP 4 - CULTIVATED FIELD CROPS

- |   |  |
|---|--|
| <p><b>Cultivated Field Crops</b></p> <ul style="list-style-type: none"> <li><span style="display: inline-block; width: 10px; height: 10px; background-color: #90EE90; border: 1px solid black; margin-right: 5px;"></span> Forage &amp; pasture</li> <li><span style="display: inline-block; width: 10px; height: 10px; background-color: #FFDAB9; border: 1px solid black; margin-right: 5px;"></span> Berries</li> <li><span style="display: inline-block; width: 10px; height: 10px; background-color: #90EE90; border: 1px solid black; margin-right: 5px;"></span> Tree plantations</li> <li><span style="display: inline-block; width: 10px; height: 10px; background-color: #FFDAB9; border: 1px solid black; margin-right: 5px;"></span> Nursery</li> <li><span style="display: inline-block; width: 10px; height: 10px; background-color: #90EE90; border: 1px solid black; margin-right: 5px;"></span> Vegetables</li> <li><span style="display: inline-block; width: 10px; height: 10px; background-color: #FFDAB9; border: 1px solid black; margin-right: 5px;"></span> Cereals</li> <li><span style="display: inline-block; width: 10px; height: 10px; background-color: #0000FF; border: 1px solid black; margin-right: 5px;"></span> Turf (only 4)</li> <li><span style="display: inline-block; width: 10px; height: 10px; background-color: #0000FF; border: 1px solid black; margin-right: 5px;"></span> Other (crop transition, cultivated land)</li> <li><span style="display: inline-block; width: 10px; height: 10px; background-color: #0000FF; border: 1px solid black; margin-right: 5px;"></span> Tree fruits, Nut trees</li> <li><span style="display: inline-block; width: 10px; height: 10px; background-color: #0000FF; border: 1px solid black; margin-right: 5px;"></span> Vines, floriculture, rhubarb</li> </ul> <p><b>Forage &amp; Pasture Practices</b></p> <ul style="list-style-type: none"> <li><span style="display: inline-block; width: 10px; height: 10px; border-bottom: 1px dashed black; margin-right: 5px;"></span> Forage</li> <li><span style="display: inline-block; width: 10px; height: 10px; border-bottom: 1px dotted black; margin-right: 5px;"></span> Pasture</li> <li><span style="display: inline-block; width: 10px; height: 10px; border-bottom: 1px dashed black; margin-right: 5px;"></span> Forage and pasture</li> <li><span style="display: inline-block; width: 10px; height: 10px; border-bottom: 1px solid black; margin-right: 5px;"></span> Unused or unmaintained</li> </ul> | <p><b>Parcels</b></p> <ul style="list-style-type: none"> <li><span style="display: inline-block; width: 10px; height: 10px; border: 1px solid black; margin-right: 5px;"></span> Surveyed</li> <li><span style="display: inline-block; width: 10px; height: 10px; border: 1px dashed black; margin-right: 5px;"></span> Not surveyed</li> </ul> <p><b>Agricultural Land Reserve</b></p> <ul style="list-style-type: none"> <li><span style="display: inline-block; width: 10px; height: 10px; border: 1px dashed black; margin-right: 5px;"></span> Boundaries (2011)</li> </ul> <p><b>Municipalities</b></p> <ul style="list-style-type: none"> <li><span style="display: inline-block; width: 10px; height: 10px; border: 1px solid black; margin-right: 5px;"></span> Boundaries (2011)</li> </ul> <p><b>Indian Reserves</b></p> <ul style="list-style-type: none"> <li><span style="display: inline-block; width: 10px; height: 10px; border: 1px dashed black; margin-right: 5px;"></span> (Boundaries 2011)</li> </ul> <p><b>Parks</b></p> <ul style="list-style-type: none"> <li><span style="display: inline-block; width: 10px; height: 10px; border: 1px solid black; margin-right: 5px;"></span> Provincial Parks</li> <li><span style="display: inline-block; width: 10px; height: 10px; border: 1px solid black; margin-right: 5px;"></span> Ecological Reserves</li> </ul> |
|---|--|

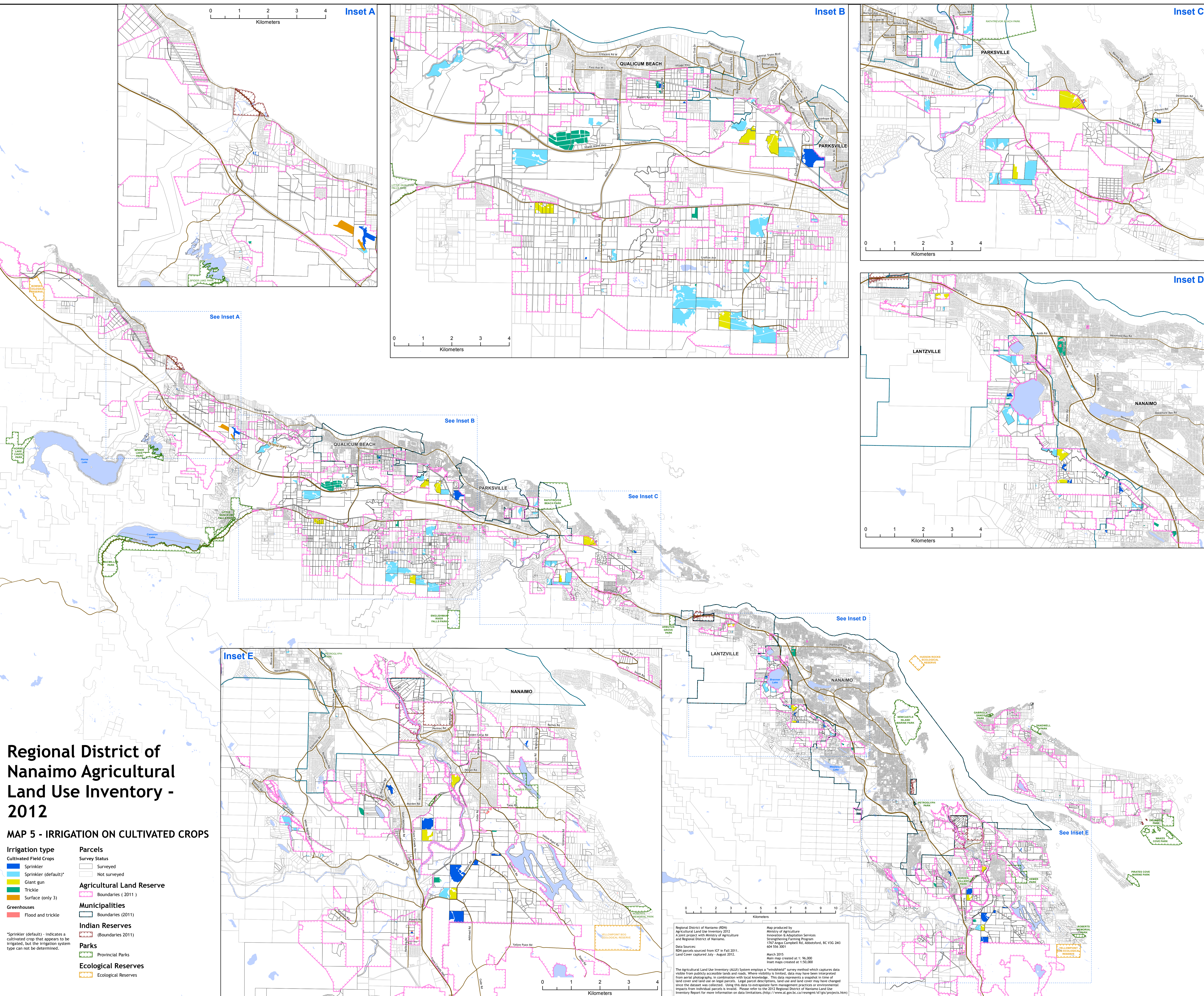
Regional District of Nanaimo (RDN)  
 Agricultural Land Use Inventory 2012  
 A joint project with Ministry of Agriculture  
 and Regional District of Nanaimo  
 1767 Angus Campbell Rd, Abbotsford, BC V3G 2M3  
 604 556 3001

Data Sources:  
 RDN parcels sourced from ICF in Fall 2011.  
 Land cover captured July - August 2012.

Map produced by  
 Ministry of Agriculture  
 Innovation & Adaptation Services  
 Strengthening Farming Program  
 1767 Angus Campbell Rd, Abbotsford, BC V3G 2M3  
 604 556 3001

March 2015  
 Main map created at 1:90,000  
 Inset maps created at 1:50,000

The Agricultural Land Use Inventory (ALUI) System employs a "windowed" survey method which captures data visible from publicly accessible lands and roads. Where visibility is limited, data may have been interpreted from aerial photography, in combination with local knowledge. This data represents a snapshot in time of land cover and land use on legal parcels. Legal parcel descriptions, land use and land cover may have changed since the dataset was collected. Using this data to extrapolate farm management practices or environmental impacts from individual parcels is invalid. Please refer to the 2012 Regional District of Nanaimo Land Use Inventory Report for more information on data limitations. (<http://www.al.gov.bc.ca/research/rf/gis/projects.htm>)



# Regional District of Nanaimo Agricultural Land Use Inventory - 2012

## MAP 5 - IRRIGATION ON CULTIVATED CROPS

- |                        |                                  |
|------------------------|----------------------------------|
| <b>Irrigation type</b> | <b>Parcels</b>                   |
| Cultivated Field Crops | Surveyed                         |
| Sprinkler              | Not surveyed                     |
| Sprinkler (default)*   | <b>Agricultural Land Reserve</b> |
| Giant gun              | Boundaries (2011)                |
| Trickle                | <b>Municipalities</b>            |
| Surface (only 3)       | Boundaries (2011)                |
| <b>Greenhouses</b>     | <b>Indian Reserves</b>           |
| Flood and trickle      | Boundaries (2011)                |
|                        | <b>Parks</b>                     |
|                        | Provincial Parks                 |
|                        | Ecological Reserves              |
|                        | Ecological Reserves              |

\*Sprinkler (default) - indicates a cultivated crop that appears to be irrigated, but the irrigation system type can not be determined.

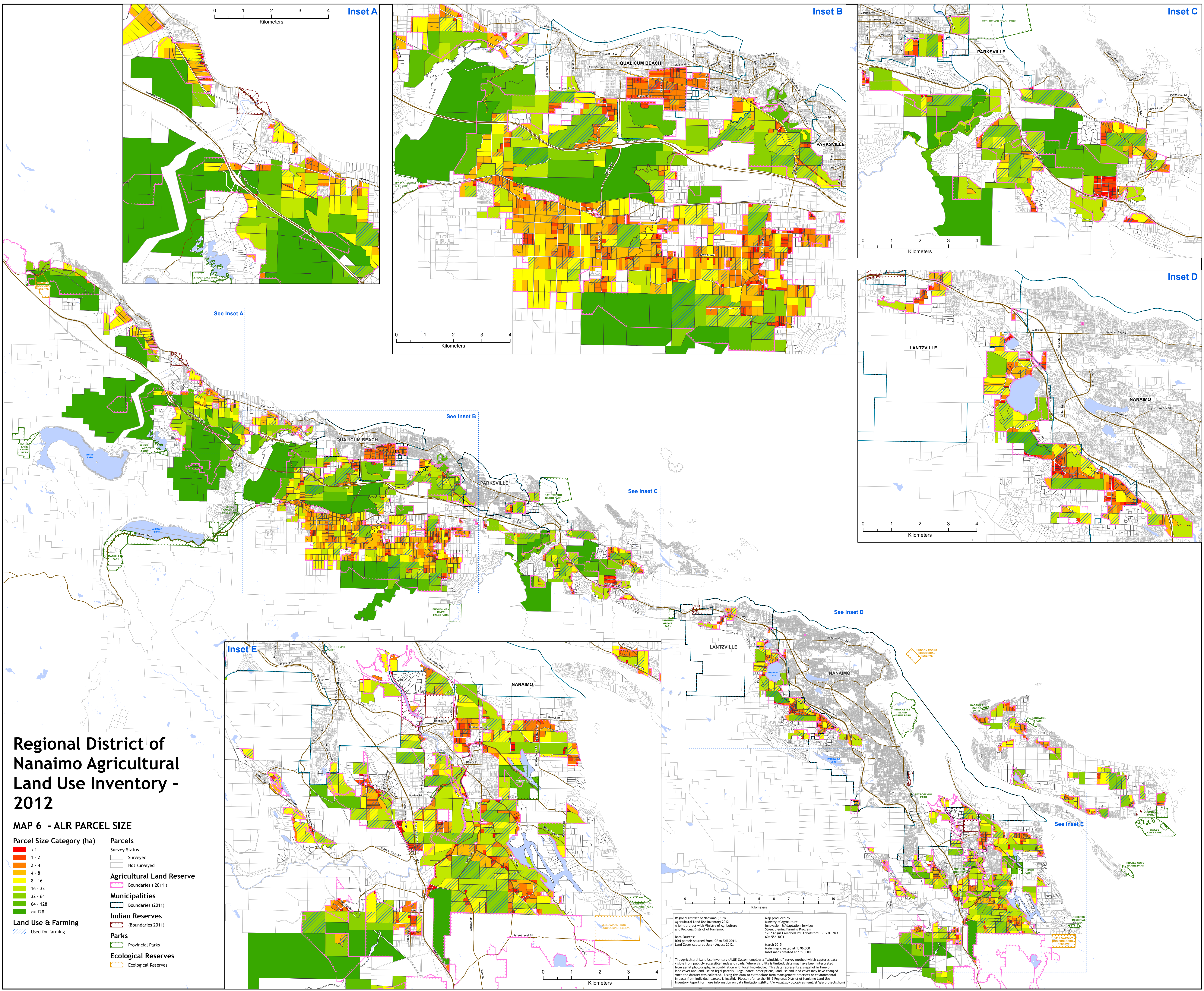
Regional District of Nanaimo (RDN)  
 Agricultural Land Use Inventory 2012  
 A joint project with Ministry of Agriculture  
 and Regional District of Nanaimo  
 1767 Angus Campbell Rd, Abbotsford, BC V3G 2M3  
 604-556-3001

Map produced by  
 Ministry of Agriculture  
 Innovation & Adaptation Services  
 Strengthening Farming Program  
 1767 Angus Campbell Rd, Abbotsford, BC V3G 2M3  
 604-556-3001

Data Sources:  
 RDN parcels sourced from ICF in Fall 2011.  
 Land Cover captured July - August 2012.

March 2015  
 Main map created at 1:90,000  
 Inset maps created at 1:50,000

The Agricultural Land Use Inventory (ALUI) System employs a "windowed" survey method which captures data visible from publicly accessible lands and roads. Where visibility is limited, data may have been interpreted from aerial photography, in combination with local knowledge. This data represents a snapshot in time of land cover and land use on legal parcels. Legal parcel descriptions, land use and land cover may have changed since the dataset was collected. Using this data to extrapolate farm management practices or environmental impacts from individual parcels is invalid. Please refer to the 2012 Regional District of Nanaimo Land Use Inventory Report for more information on data limitations. (<http://www.al.gov.bc.ca/research/rsf/gis/projects.htm>)



# Regional District of Nanaimo Agricultural Land Use Inventory - 2012

## MAP 6 - ALR PARCEL SIZE

- |   |   |
|---|---|
| <b>Parcel Size Category (ha)</b>  | <b>Parcels</b>  |
| <span style="display:inline-block; width:10px; height:10px; background-color:red; border:1px solid black;"></span> < 1                    | <span style="display:inline-block; width:10px; height:10px; border:1px solid black;"></span> Surveyed   |
| <span style="display:inline-block; width:10px; height:10px; background-color:orange; border:1px solid black;"></span> 1 - 2               | <span style="display:inline-block; width:10px; height:10px; border:1px dashed black;"></span> Not surveyed  |
| <span style="display:inline-block; width:10px; height:10px; background-color:yellow; border:1px solid black;"></span> 2 - 4               | <span style="display:inline-block; width:10px; height:10px; background-color:lightgreen; border:1px solid black;"></span> Agricultural Land Reserve |
| <span style="display:inline-block; width:10px; height:10px; background-color:yellowgreen; border:1px solid black;"></span> 4 - 8          | <span style="display:inline-block; width:10px; height:10px; border:1px dashed black;"></span> Boundaries ( 2011 )                                   |
| <span style="display:inline-block; width:10px; height:10px; background-color:green; border:1px solid black;"></span> 8 - 16               | <b>Municipalities</b>   |
| <span style="display:inline-block; width:10px; height:10px; background-color:lightgreen; border:1px solid black;"></span> 16 - 32         | <span style="display:inline-block; width:10px; height:10px; border:1px solid black;"></span> Boundaries (2011)                                      |
| <span style="display:inline-block; width:10px; height:10px; background-color:green; border:1px solid black;"></span> 32 - 64              | <b>Indian Reserves</b>  |
| <span style="display:inline-block; width:10px; height:10px; background-color:darkgreen; border:1px solid black;"></span> 64 - 128         | <span style="display:inline-block; width:10px; height:10px; border:1px dashed black;"></span> (Boundaries 2011)                                     |
| <span style="display:inline-block; width:10px; height:10px; background-color:darkgreen; border:1px solid black;"></span> >= 128           | <b>Parks</b>  |
| <b>Land Use &amp; Farming</b>   | <span style="display:inline-block; width:10px; height:10px; background-color:lightgreen; border:1px solid black;"></span> Provincial Parks          |
| <span style="display:inline-block; width:10px; height:10px; background-color:lightblue; border:1px solid black;"></span> Used for farming | <span style="display:inline-block; width:10px; height:10px; background-color:lightgreen; border:1px solid black;"></span> Ecological Reserves       |
|   | <span style="display:inline-block; width:10px; height:10px; background-color:lightgreen; border:1px solid black;"></span> Ecological Reserves       |

Regional District of Nanaimo (RDN) parcels sourced from ICF in Fall 2011. Land cover captured July - August 2012.

Map produced by Ministry of Agriculture Innovation & Adaptation Services Strengthening Farming Program 1767 Angus Campbell Rd, Abbotsford, BC V3G 2M3 604 556 5001

March 2015  
Main map created at 1:96,000  
Inset maps created at 1:50,000

The Agricultural Land Use Inventory (ALUI) System employs a "windowed" survey method which captures data visible from publicly accessible lands and roads. Where visibility is limited, data may have been interpreted from aerial photography, in combination with local knowledge. This data represents a snapshot in time of land cover and land use on legal parcels. Legal parcel boundaries, land use and land cover may have changed since the dataset was collected. Using this data to extrapolate farm management practices or environmental impacts from individual parcels is invalid. Please refer to the 2012 Regional District of Nanaimo Land Use Inventory Report for more information on data limitations. (<http://www.al.gov.bc.ca/research/rf/gis/projects.htm>)